

HSF

NOTES:

- Current Rating: 5.0AMP
- Contact Resistance: 25mΩ Max
- Withstand Voltage: 1000V AC/DC
- Insulation Resistance: 5000MΩ Min
- Operation Temperature: -55°C to +105°C

Contact Material: Brass
 Contact plating: Au Or Sn over Ni
 Insulator Material: PBT+30%G.F UL94V-0
 Shell Material: Spcc, Plating: Ni Plated
 Rivet/Harpoon: Brass, Sn over Ni
 Screw: Brass, Plating Ni Plated

Ordering Information

6200-X15 M X 15 F X XX X X

Dim of Dual Port Center A=19.88mm
 Center B=19.05mm

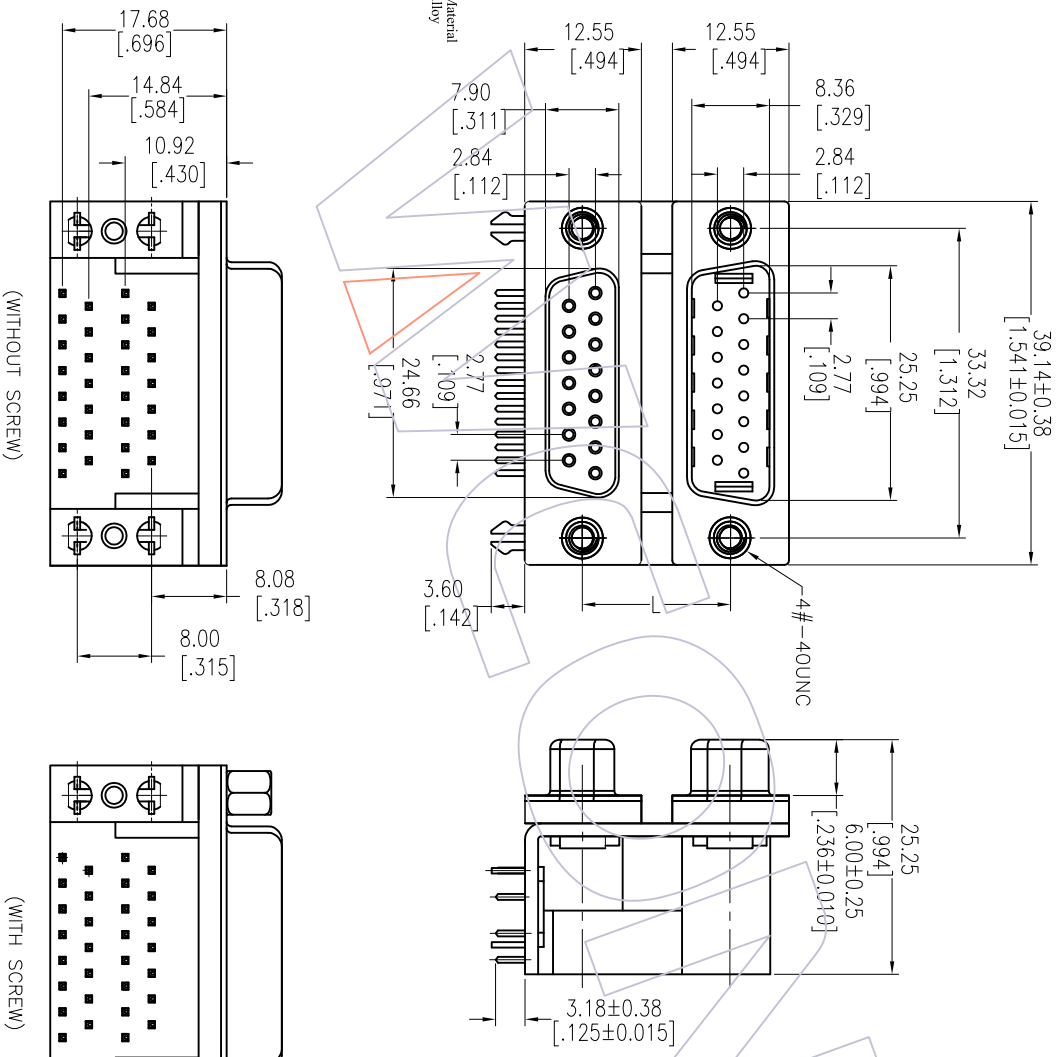
Down Port Color
 U=Black
 B=Blue

Bracket Material
 0=Zinc Alloy
 1=SPCC

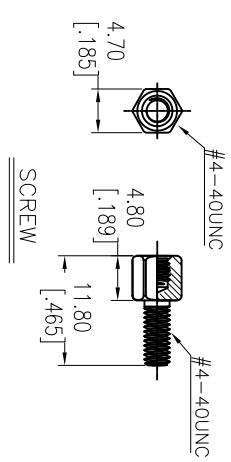
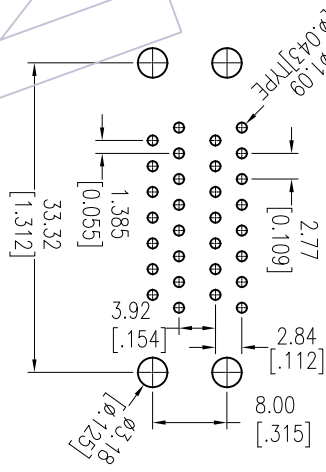
Contact Plating: I=SPCC
 S0=Gold Flash/Tin
 S3=10u/Gold/Tin
 S4=15u/Gold/Tin
 S5=30u/Gold/Tin
 SN=Tin

Up Port Type Up Port Color Down Port Type
 F=Female B=Black U=Blue
 M=Male U=Blue M=Male

Dim of Dual Port Center	DIM L
15.88mm	A
19.05mm	B



Recommended P.C.B Layout(Top Side)
 (PCB BOARD TOLERANCE±0.05)



REV	DATE	MODIFICATION DESCRIPTION	CHANGE	OPERATION	DRAW	DATE	SCALE	FIT	PART NO.	TITLE:	WCON-Dongguan	WCON-Kunshan
A1	2015/11/06	Modify	△	X.X	Allen	2015/11/06	mm	A4	6200-X15MX15FXXXXX	D-SUB Connector	Http: www.wcon.com	
A0	2013/01/10	NEW	---	X.XXX	CHECK	DATE	SIZE	1/1		Dual Row Right Angle	Tel: +86 769 85358920	Tel: +86 512 57468408
				Angle	APPROVE	DATE	SHEET	PROJ.	Customer NO.		Fax: +86 769 85358915	Fax: +86 512 57468468
				DIM							E-mail: sales@wcon.com	E-mail: sales@wcon.com

WCON

WCON-Dongguan
 Tel: +86 769 85358920
 Fax: +86 769 85358915
 E-mail: sales@wcon.com

WCON-Kunshan
 Tel: +86 512 57468408
 Fax: +86 512 57468468
 E-mail: sales@wcon.com