

HSP

NOTES:

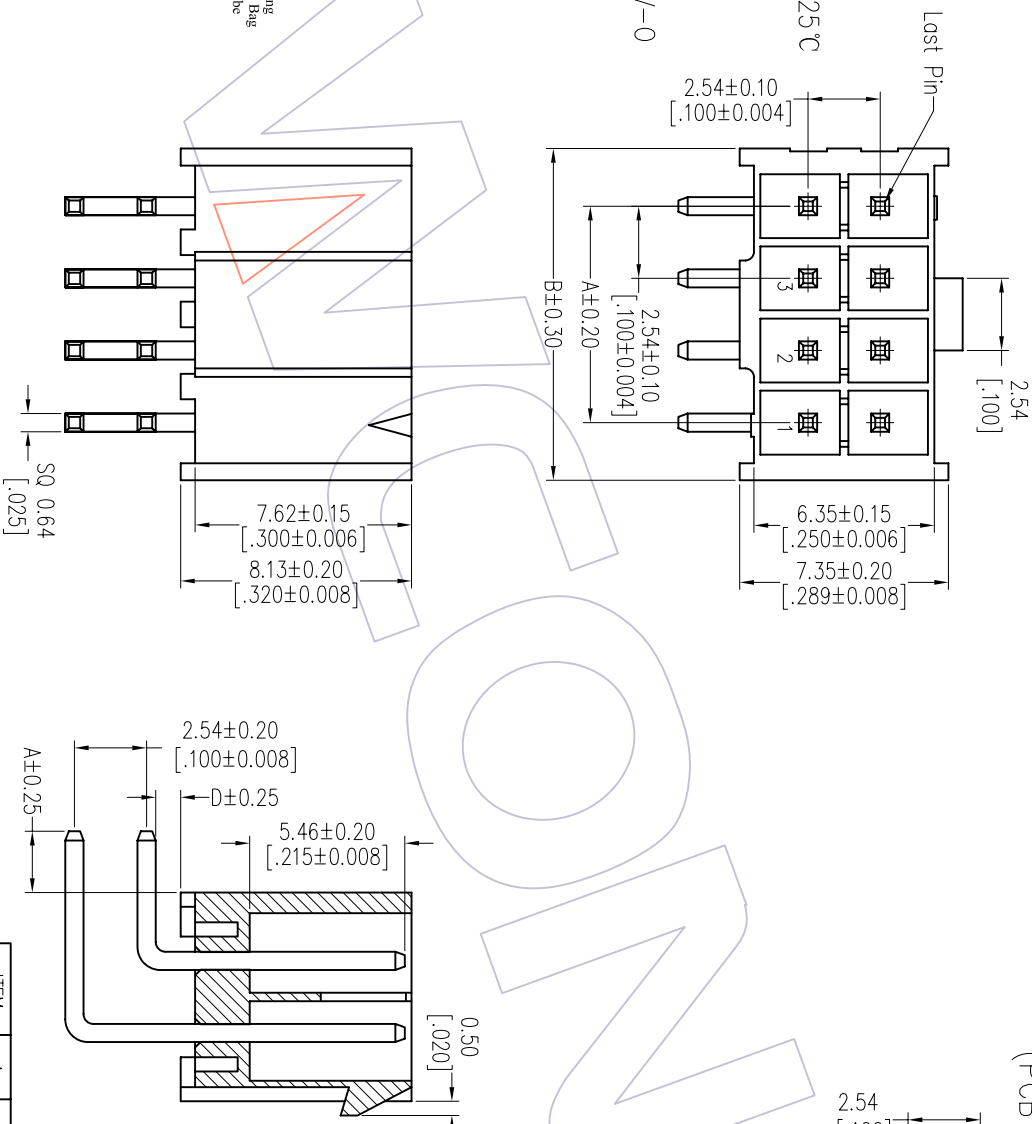
Rated Current: 3.0AMP
 Contact Resistance: 20mΩ max
 Withstand Voltage: 1000V AC/DC
 Insulation Resistance: 1000MΩ min
 Operation Temperature: -55°C to +125°C

Contact Material: Brass
 Contact Plating: Au or Sn Over Ni
 Insulator Material: LCP + 30%G.F UL94V-0

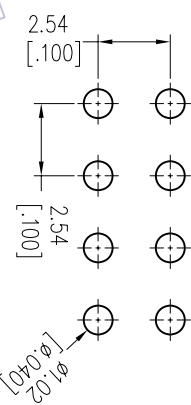
Ordering Information

WF2549-2WR XX X 0 1

No. of Rows No. of pins Contact Plating Color Packing
 02-25P S0=Gold Flash/Tin B=Black 0=Tube Bag
 S3=10μ Gold/Tin E=Beige 1=Tube
 S4=15μ Gold/Tin W=White T=Natural
 S5=30μ Gold/Tin C0=Cold Flash
 G3=10μ Cold G4=15μ Cold G5=30μ Cold
 Blank=Tin



Recommended P.C.B Layout (Top Side)
 (PCB BOARD TOLERANCE ±0.05)



Specification & Ordering Information:

Circuit	Part No.	Dimension	
		A	B
2x02	WF2549-2WR02X01	2.54	6.60
2x03	WF2549-2WR03X01	5.08	9.14
2x04	WF2549-2WR04X01	7.62	11.68
2x05	WF2549-2WR05X01	10.16	14.22
2x06	WF2549-2WR06X01	12.70	16.76
2x07	WF2549-2WR07X01	15.24	19.30
2x08	WF2549-2WR08X01	17.78	21.84
2x09	WF2549-2WR09X01	20.32	24.38
2x10	WF2549-2WR10X01	22.86	26.92
2x11	WF2549-2WR11X01	25.40	29.46
2x12	WF2549-2WR12X01	27.94	32.00
2x13	WF2549-2WR13X01	30.48	34.54
2x14	WF2549-2WR14X01	33.02	37.08
2x15	WF2549-2WR15X01	35.56	39.62
2x16	WF2549-2WR16X01	38.10	42.16
2x17	WF2549-2WR17X01	40.64	44.70
2x18	WF2549-2WR18X01	43.18	47.24
2x19	WF2549-2WR19X01	45.72	49.78
2x20	WF2549-2WR20X01	48.26	52.32
2x21	WF2549-2WR21X01	50.80	54.86
2x22	WF2549-2WR22X01	53.34	57.40
2x23	WF2549-2WR23X01	55.88	59.94
2x24	WF2549-2WR24X01	58.42	62.48
2x25	WF2549-2WR25X01	60.96	65.02

ITEM	A	D
Standard	2.16	0.88
Alternate		

REV	DATE	MODIFICATION DESCRIPTION	CHANGE	OPERATION		DRAW		SCALE		PART NO.		
				DIW	TOL	Angle	± 3'	APPROVE	DATE	UNIT	FIT	SEE TAB
AO	2012/09/10	NEW										2.54mm WAFER 90° DIP
												Customer NO.

WCON

Http: www.wcon.com

WCON-Dongguan WCON-Kunshan
 Tel: +86 769 85358920 Tel: +86 512 57468408
 Fax: +86 769 85358915 Fax: +86 512 57468468
 E-mail: sales@wcon.com E-mail: sales@wcon.com